

Onboard Weighing Sensor

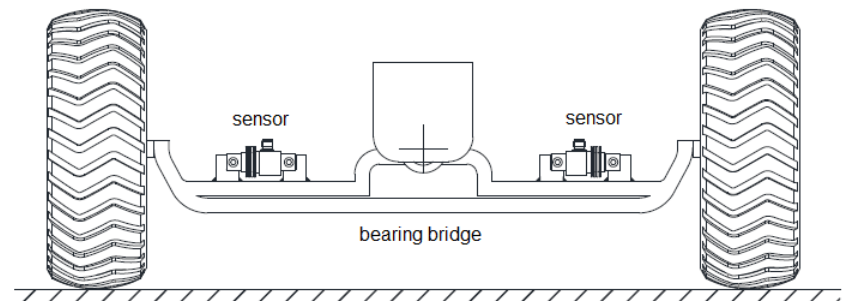
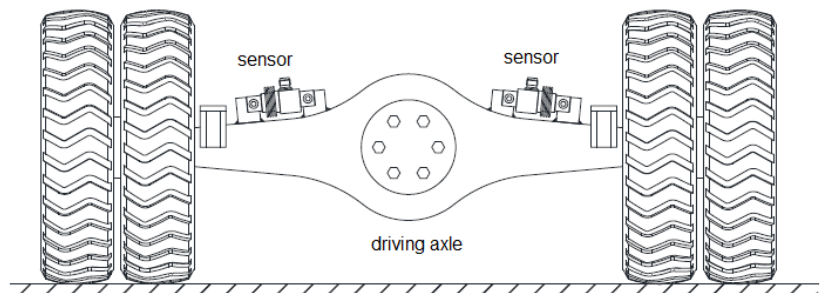
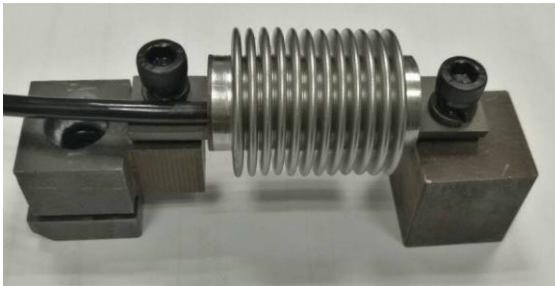
Model: PT124B-273



Description

The traditional onboard weighing sensors generally use the strain type weighing sensor or load sensor and their output signals are relatively weak, weak signal of late data amplification processing and data stability caused trouble, and our company's patent product star - silicon capacitance macro gravity sensor solves the this a series of problems

Two or more silicon capacitance macro gravity sensor on each axle and axle of the axle housing in a specific part of the installation, when the vehicle in a cargo loading the cargo weight change, the weight change will cause the corresponding deformation axle and axle housing, sensor can accurately induction to the stress and deformation and the deformation into electronic signals, through cable signal transmission to the weighing controller The product is of high stability, good stability, high quality seal and corrosion resistance . It can be directly put into water, oil and other liquid medium can also be compatible with other mine detection system.



Application

Application fields: Logistics vehicle, refuse processing, petrochemical industry, coal mine and etc.

Application vehicles: cement mixer, oil tanker, garbage truck and etc.

Application scenarios: Cargo tracking, road safety, vehicle overloading, vehicle overrun, weighing-calculating charge.

Feature

Measurement load from 100kg to 500t

Non-contact measurement

Stainless steel house, corrosion resistance

Easy installation and remove with mounting bracket

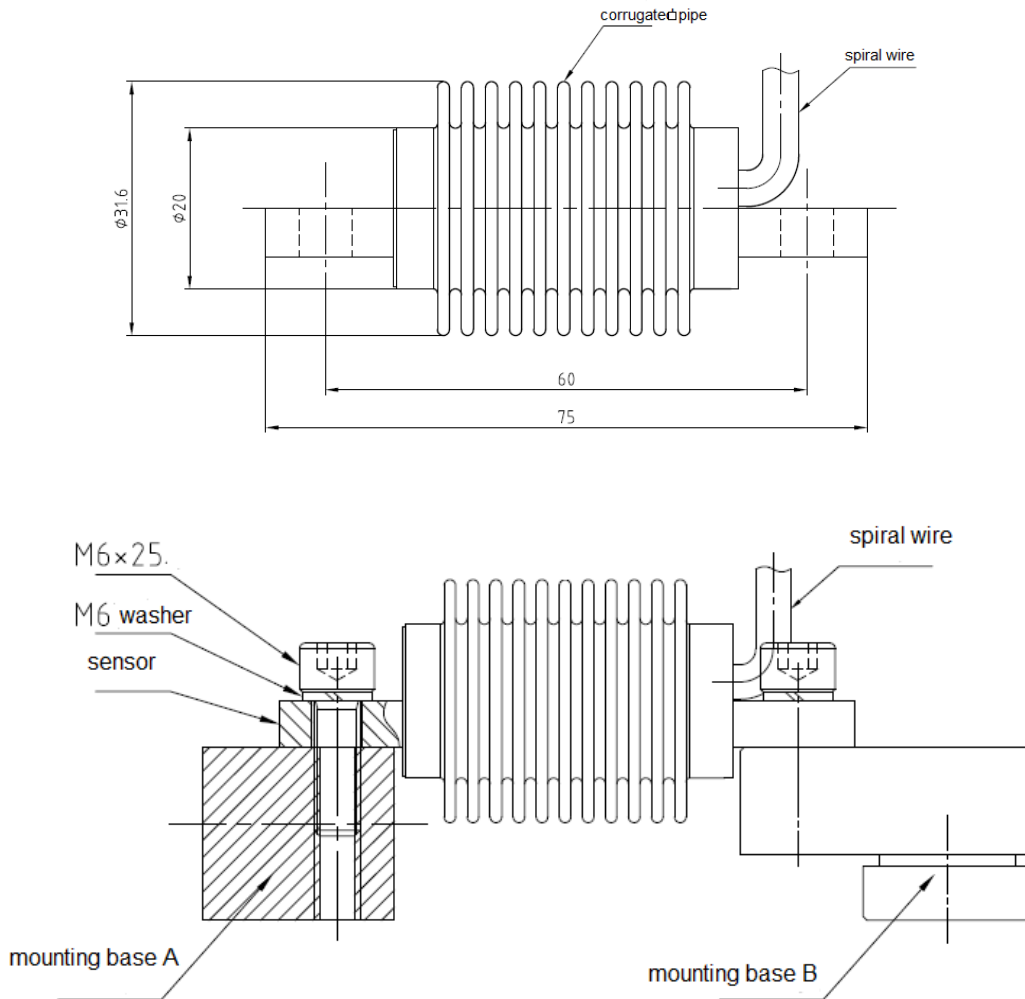
Output signal up to 20mV/V

With antivibration more than 5G/40Hz

Specification

Specs	Value	Remarks
Measurement range	100kg--500t	
Overload	150%	
Accuracy	$\pm 0.1\%FS$, $\pm 0.5\%FS$	Linearity, repeatability and hysteresis
Power supply	5VDC	Vehicle Terminal System 12-24VDC
Output signal	Digital	Analog signal optional
Communication interface	Aviation plug	
Communication type	Standard RS485	RS232 optional
Protection	IP67	Special design for IP68
Operating temp	-30~85	
Required Install QTY	Based on the vehicle type	1-2pcs each vehicle

Dimension



Installation procedures and precautions

1, Installation procedures

- 1) Confirm the mounting position and quantity
- 2) Weld the mounting base
- 3) Confirm the mounting direction
- 4) Mounting the sensor
- 5) Connect the sensor

2, Cautions

1) Welding

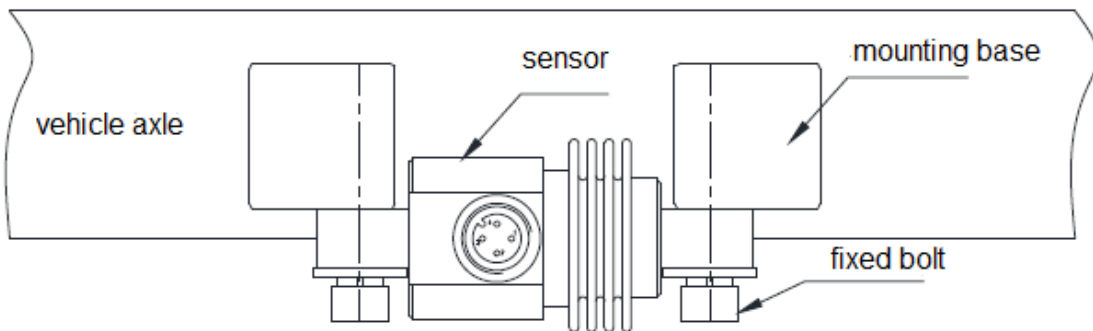
Make sure the mounting base and the axle housing tight fit, at first fix the 4 corners with spot welding, then weld around.

2) Screw fastening

At first screw the bolt with hand, make sure the contact surface tight fit, then use hexagon spanner alternating right and left to tight enough.

3) Wiring

Connect the sensor according to the wiring code.



Completed installation sketch map

Wiring Code

Code	Color	Function
1	Red / Brown	E+
2	White / Black	GND
3	Blue	RXD
4	Yellow	TXD

Ordering Guide with * are required, with --- is optional

Model	Range (kg/t)	Output	Mating cable	Other requirement
PT124B-273	*	*	*	---

Example: PT124B-273-50T-RS232-10m cable

Shanghai Zhaohui Pressure Apparatus Co., Ltd

5-6F No.8 Building No.115 ,Lane 1276 Nanle Road Songjiang District Shanghai 201600 China
 Tel:+86-21-51691919 67755189 Fax:+86-21-67755185
 E-mail: info@zhyqsensor.com
 www.zhyqsensor.com

