



# CNG FILLING STATIONS

catalog 2016

High pressure compressors  
for natural gas refuelling of  
vehicles for private use.

[coltri.com](http://coltri.com)

# MCH 5 EVO CNG

## 85 l/min - 5 m<sup>3</sup>/h



COMPRESSOR	MCH 5 EVO CNG
REFUELLING TIME	Bombola 80 l (kg 11.5) 0/200 bar : 3h
CHARGING RATE	85 l/min 5 m <sup>3</sup> /h
OPERATING PRESSURE	200 - 250 bar
MOTOR	Three/Single phase electric
POWER	3 kW (230 V - 50/60 Hz) (400 V - 50 Hz)
DIMENSIONS	Height 110 cm / Width 70 cm / Depth 67 cm
DRY WEIGHT	155 kg
NOISE	65 dB (1 m distance)
NO. STAGES & CYLINDERS	3
OIL	Coltri Oil CE 750
BODY	Painted steel
INTER-STAGE & FINAL COOLING COIL	Stainless steel
SUCTION PRESSURE MIN/MAX	5 mbar - 300 mbar
RPM	1250
CODE	SC000786/CNG (3 kW - 230 V - 50 Hz) SC000787/CNG (3 kW - 230 V - 60 Hz)

4,5M CNG CAR REFUELLING HOSE WITH NOZZLE



### REFUELLING NOZZLE

Natural gas refuelling nozzle with direct action NGV1 attachment suitable for pressures up to 300 bar and breakaway.



SERVICE  
GAUGE

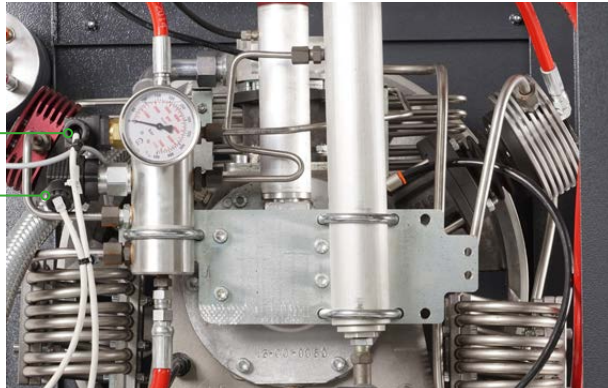
OVERPRESSURE  
SENSOR

GAS LEAK  
SENSOR

STAINLESS STEEL  
COOLING COIL

OUTLET

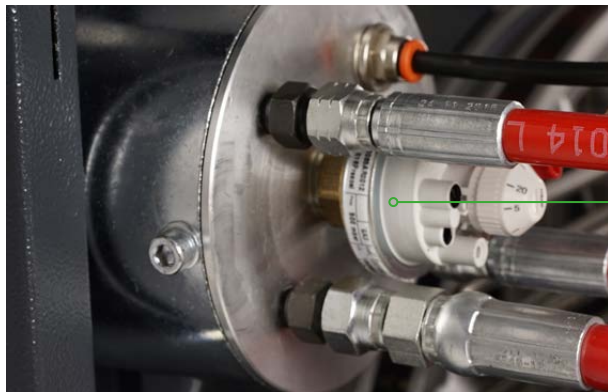
THERMOSTAT  
MAX WORKING  
PRESSURE SWITCH



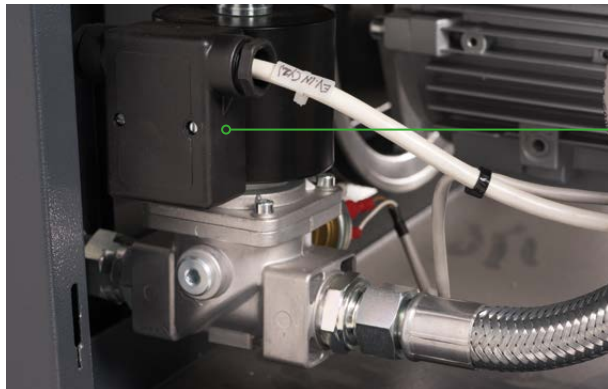
MIN. INTAKE  
PRESSURE SWITCH



THIRD STAGE  
HIGH PRESSURE HEAD



SOLENOID SHUT OFF VALVE  
FROM INTAKE – GAS LINE



# MCH 10 EVO CNG

## 215 l/min - 13 m<sup>3</sup>/h



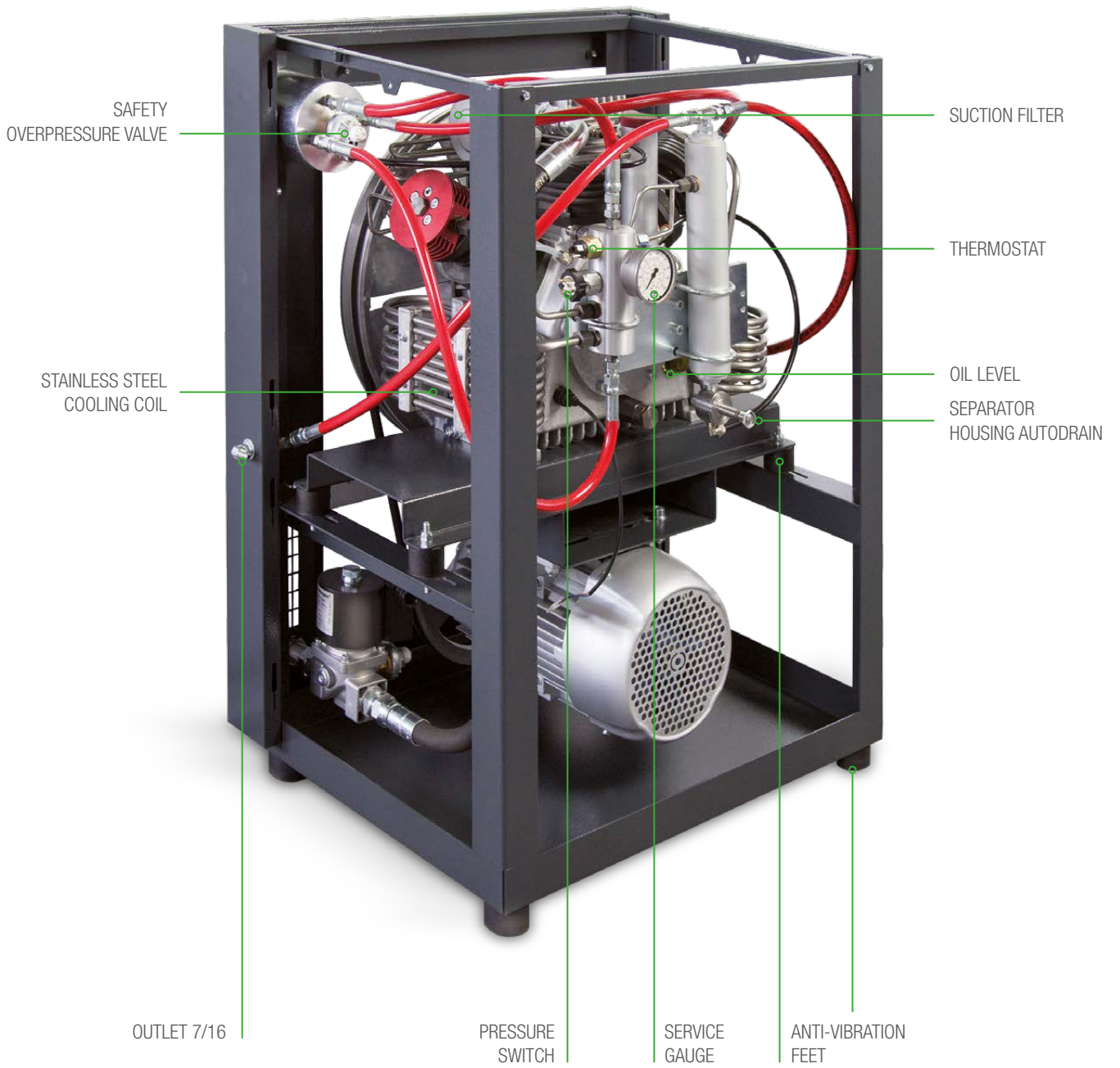
COMPRESSOR	MCH 10 EVO CNG
REFUELLING TIME	Bombola 80 l (kg 11.5) 0/200 bar : 1h 15'
CHARGING RATE	215 l/min 13 m <sup>3</sup> /h
OPERATING PRESSURE	200 - 250 bar
MOTOR	Three phase electric
POWER	4 kW (400 V - 50 Hz)
DIMENSIONS	Height 106 cm / Width 70 cm / Depth 66 cm
DRY WEIGHT	160 kg
NOISE	68 dB (1 m distance)
NO. STAGES & CYLINDERS	3
OIL	Coltri Oil CE 750
BODY	Painted steel
INTER-STAGE & FINAL COOLING COIL	Stainless steel
SUCTION PRESSURE MIN/MAX	5 mbar - 300 mbar
RPM	1250
CODE	SC000788/CNG (4 kW - 400V - 50Hz)

4,5M CNG CAR REFUELLING HOSE WITH NOZZLE



### REFUELLING NOZZLE

Natural gas refuelling nozzle with direct action NGV1 attachment suitable for pressures up to 300 bar and breakaway.

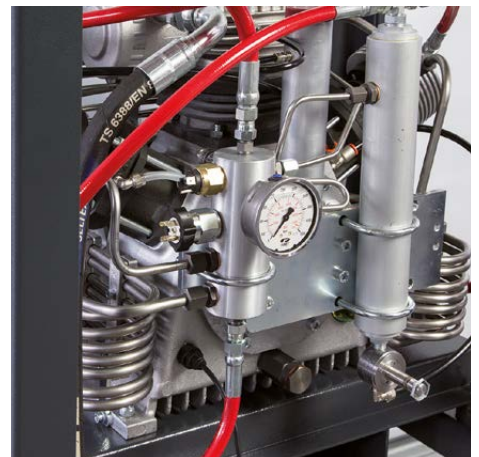






ANTISTATIC  
COOLING FAN

GAS LINE  
INLET



# MCH 14 EVO CNG

## 265 l/min - 15,9 m<sup>3</sup>/h



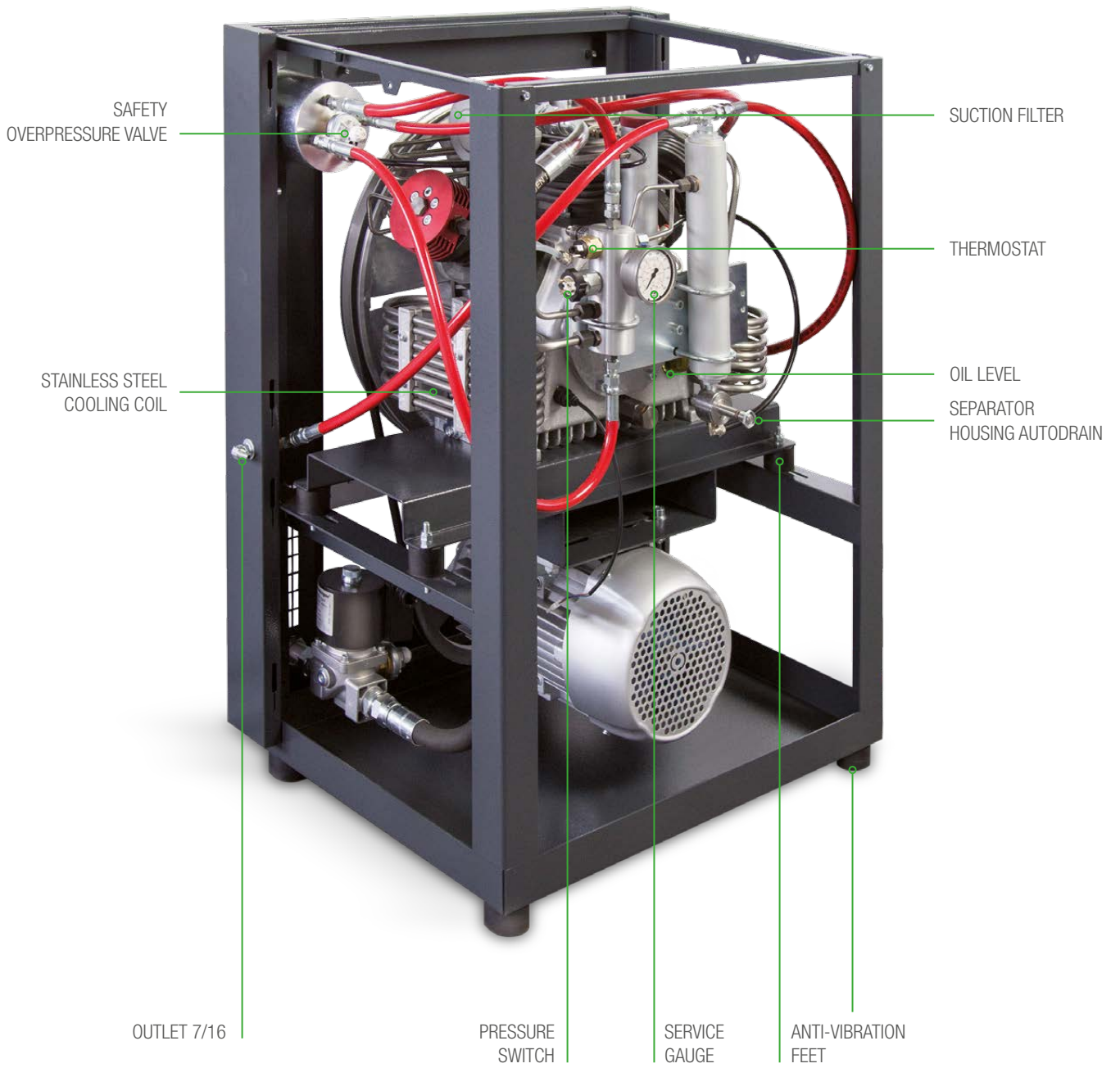
COMPRESSOR	MCH 14 EVO CNG
REFUELLING TIME	Bombola 80 l (kg 11.5) 0/200 bar : 1h
CHARGING RATE	265 l/min 15,9 m <sup>3</sup> /h
OPERATING PRESSURE	200 - 250 bar
MOTOR	Three phase electric
POWER	5,5 kW (400 V - 50 Hz)
DIMENSIONS	Height 106 cm / Width 70 cm / Depth 66 cm
DRY WEIGHT	170 kg
NOISE	70 dB (1 m distance)
NO. STAGES & CYLINDERS	3
OIL	Coltri Oil CE 750
BODY	Painted steel
INTER-STAGE & FINAL COOLING COIL	Stainless steel
SUCTION PRESSURE MIN/MAX	5 mbar - 300 mbar
RPM	1600
CODE	SC000790/CNG (5,5 kW - 400 V - 50 Hz)

4,5M CNG CAR REFUELLING HOSE WITH NOZZLE



### REFUELLING NOZZLE

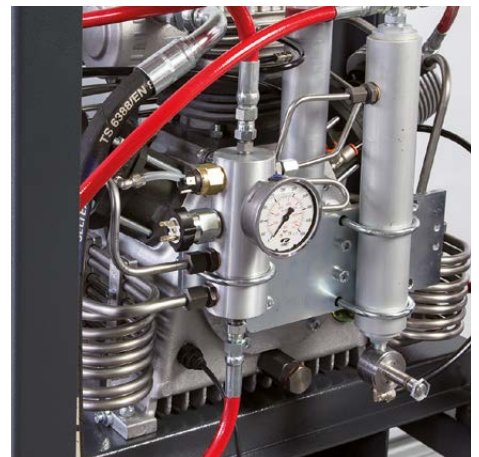
Natural gas refuelling nozzle with direct action NGV1 attachment suitable for pressures up to 300 bar and breakaway.





ANTISTATIC  
COOLING FAN

GAS LINE  
INLET



# MCH 20 EVO CNG

## 330 l/min - 20 m<sup>3</sup>/h



COMPRESSOR	MCH 20 CNG
REFUELLING TIME	Bombola 80 l (kg 11.5) 0/200 bar : 48'
CHARGING RATE	330 l/min 20 m <sup>3</sup> /h
OPERATING PRESSURE	200 - 250 bar
MOTOR	Three phase electric
POWER	9 kW (400 V - 50 Hz)
DIMENSIONS	Height 155 cm / Width 79 cm / Depth 124 cm
DRY WEIGHT	420 kg
NOISE	70 dB (1 m distance)
NO. STAGES & CYLINDERS	4
OIL	Coltri Oil CE 750
BODY	Painted steel
PRESSURE VALVE	3
FINAL PRESSURE VALVE	1
SUCTION PRESSURE MIN/MAX	5 mbar - 300 mbar
RPM	1240
INTER-STAGE & FINAL COOLING COIL	Stainless steel
FILTERS	2 Hyperfilter
CODE	SC000127/CNG (9 kW - 400 V - 50 Hz)



Remote refuelling electrical panel  
Height 60 cm  
Width 40 cm  
Depth 20 cm







# MCH 24 EVO CNG

## 400 l/min - 24 m<sup>3</sup>/h



COMPRESSOR	MCH 24 CNG
REFUELLING TIME	Bombola 80 l (kg 11.5) 0/200 bar : 40'
CHARGING RATE	400 l/min 24 m <sup>3</sup> /h
OPERATING PRESSURE	200 - 250 bar
MOTOR	Three phase electric
POWER	11 kW (400 V - 50 Hz)
DIMENSIONS	Height 155 cm / Width 79 cm / Depth 124 cm
DRY WEIGHT	420 kg
NOISE	70 dB (1 m distance)
NO. STAGES & CYLINDERS	4
OIL	Coltri Oil CE 750
BODY	Painted steel
PRESSURE VALVE	3
FINAL PRESSURE VALVE	1
SUCTION PRESSURE MIN/MAX	5 mbar - 300 mbar
RPM	1240
INTER-STAGE & FINAL COOLING COIL	Stainless steel
FILTERS	2 Hyperfilter
CODE	SC000127/CNG (11 kW - 400 V - 50 Hz)





## AIR FILTER CARTRIDGE

MOLECULAR SIEVE ONLY

**CODE** 36-07-034/CNG/1 FOR MCH 20/24

WITH MOLECULAR SIEVE & ACTIVE CARBON

**CODE** 36-07-034/CNG/2 FOR MCH 20/24



## REFUELLING NOZZLE WITH BREAKAWAY

NGV1 INTERNATIONAL TK4

**CODE** ADATTATORE/TK4



## OIL FILTER

**CODE** 36-06-006 FOR MCH 20/24



## CNG HOSE REELER

**CODE** SC00403 FOR MCH 5/10/14



## 4,5MT HOSE

**CODE** 24-06-020 FOR MCH 5/10/14



## KIT FELTS

**CODE** 36-00-0800 FOR MCH 20/24



## SYNTHETIC OIL

**CODE** SC000496 Coltri CE 750 1 l



## ACTIVE CARBON

**CODE** SC000350 1 l



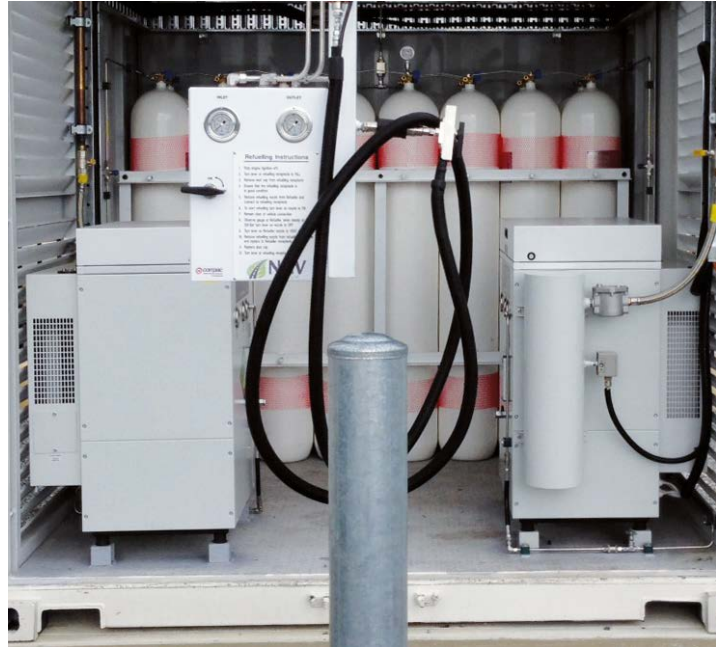
## MOLECULAR SIEVE

**CODE** SC000380/CNG 1 l









**AEROTECNICA COLTRI® S.p.A.**

Via dei Colli Storici 177  
25015 Desenzano del Garda  
Brescia - ITALY

Tel: +39.030.9910301

+39.030.9910297

Fax: +39.030.9910283

**www.coltri.com**

info@coltri.com



High pressure compressors  
for natural gas refuelling of  
vehicles for private use.

Some technical characteristics and products presented in this catalogue may be modified or substituted without prior notice.

**coltri.com**